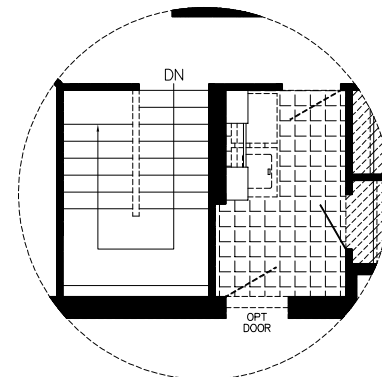


OPT STAIRWELL



OPT STAIRWELL

41809 41X58/56/52 2241 SQ FT



MODULINE INTERNATIONAL INC.

P.O. BOX 190  
1175 RAILWAY STREET  
PENTICTON, B.C. V2A 6K3  
(250) 493-0122

DRAWN BY: J.B.T.

DATE: 12-11-07

CHECKED BY:

NO.

REVISIONS:

INITIALS:

DATE:

TITLE:

LANDMARK

DRAWING NO.

PENTICTON

SERIAL NO.

41809

STANDARD